



WORLD'S BEST
ALLOY BULLBARS

East Coast Bullbars (ECB Pty Ltd)

Tel: 07 3897 5700

Fax: 07 3283 1168

ecb@ecb.com.au www.ecb.com.au

29 Snook St
Clontarf QLD 4019
Australia

Po Box 122
Margate QLD 4019
Australia

BT107SY

REPLACES: 12.11.10

REVISED: 16.11.10

FITTING INSTRUCTIONS

TOYOTA LANDCRUISER 200 SERIES 11/07 ON BIG TUBE™ BAR (WITH FOG LAMPS) WINCH COMPATIBLE VEHICLE FRONTAL PROTECTION SYSTEM (VFPS) FOR AIR BAG & ADR COMPLIANT VEHICLES

Check installation hardware before commencing.

Special requirements:

- T30 Torx bit with suitable driver for fitment.
- If vehicle not fitted with original bumper lights, an auxiliary wiring harness (not supplied) will be required to wire the lights supplied to the vehicles low beam light circuit.
- There are steps within the fitting stages of this product where it is recommended that a 2nd person is required for assistance.

1. Lift bonnet.
2. Remove grille and headlamp cover, seven plastic push pull clips.
3. Remove three bolts from top of grille. Directly under outer bolts are two grille clips. Slide finger into hole in front of clip and push retainer to side to release clip. Remove grille as part of bumper.
4. Remove plastic splash guards from around tow points, four 10mm head bolt and one plastic 12mm head nut (per side).
5. Remove bumper and grille assembly. Six 10mm head bolts, three T30 Torx head screws from front of wheel arch (per side) and three push pull clips from behind grille. Pull bumper sides outward to release plastic clips from guard edges and plastic bolt clips. **NOTE:** To remove from under headlamp, a small flat head screwdriver may need to be pushed between plastic bumper and steel retaining clip from underneath guard. **See figure 1.**
6. Remove polypropylene infill and aluminium bumper support and crash cans. Three 17mm nuts (per side) accessed from holes in front of support. Remove support to access four 14mm nuts (per side) on crash cans. Remove crash cans.
7. Remove tow hooks. Two 17mm bolts (per side).
8. Trim plastic radiator surrounds to allow fitment of ECB steel winch frame.
9. Attach ECB steel bumper retaining bracket (supplied) to original steel under body guarding using four M6 x 20 bolts, flat washers, spring washers and nuts (supplied). **See figure 2.**
10. Fit ECB steel winch frame (supplied) to front of chassis rails using eight M10 nuts (supplied). **Finger tighten only.**
11. Using two M12 x 1.25 x 55 bolts, spring washers and flat washers per side (supplied), refit original tow hooks, through ECB steel winch frame to vehicle. **Tighten all bolts.** Tow hook bolts first, followed by chassis bolts. **See figure 3.**
12. Fit ECB steel bar mounting brackets (supplied) to side of ECB steel winch frame using three ½ x 1 ½ bolts, flat washers, spring washers and nuts (supplied). Align flat across winch frame. **Tighten all bolts. See figure 4.**



**WORLD'S BEST
ALLOY BULLBARS**

East Coast Bullbars (ECB Pty Ltd)

Tel: 07 3897 5700

Fax: 07 3283 1168

ecb@ecb.com.au www.ecb.com.au

29 Snook St
Clontarf QLD 4019
Australia

Po Box 122
Margate QLD 4019
Australia

13. Attach steel gusset brackets (supplied) between steel mounting brackets and winch mount, using ½ x 2 ½ bolts, nuts, flat and spring washers (supplied) for mounting bracket holes and ½ x 1 ½ bolts, nuts, flat and spring washers (supplied) for winch mount holes. **FINGER TIGHTEN ONLY. See figure 5.**
14. Fit fairlead rollers using two ½ x 1 ½ bolt, nut and washer (supplied). Feed ½ x 1 ½ bolt, washer from inside. Attach nut and washer on outside. **FINGER TIGHTEN ONLY. See figure 6.**
15. Fit winch to winch frame using original 3/8 x 1 ¼ bolts and spring washer with 3/8 flat washer (supplied). Ensure winch is cable is pulled through fairlead as installing.
16. Fit winch control box to control box mount (supplied). For XD9000 use front holes and for XP9000 use side holes. **See figure 7.** Wire control box to winch as per winch instructions. Fit control box wiring to allow control box to sit forward of winch mount. **TIGHTEN ALL BOLTS. See figure 8.**
17. Splice ECB indicator/park light into original wiring loome. Use cable locks (supplied). Wiring loome accessible behind headlights.
18. Splice fog lamps into original wiring loome. Use cable locks (supplied). For vehicles without original bumper lights, wire in auxiliary harness and switch to vehicles low beam circuit.
19. Remove plastic grilles from bumper cover. Mark bumper and cut using a jigsaw. **See figure 9.** Lower mark is 30mm up from indent lines in lower bumper skin. **See figure 10**
20. Refit bumper cover to vehicle as per reverse of steps 2 to 5, placing ECB steel mounting bracket through grille holes. **Note:** Place ECB wiring harness through bumper whilst fitting.
21. Attach lower section of bumper cover and plastic shield to ECB retaining bracket using four M6 x 20 bolts, flat washers, spring washers and nuts (supplied).
22. **FOR VEHICLES WITH FOG LIGHTS:** Using three 300mm zip ties, secure fog light wiring and washer tubing to underside of grille support bracket.
23. Fit ECB LED indicator / park lights (supplied) into protection bar as per instructions supplied with the LED indicator kit. **NOTE: Ensure park light is to outside. See figure11.**
24. Attach ECB fog lights to protection bar. Place M6 x 20 bolts, spring washers (supplied) through light mount from inside and attach nut to top. Slide assembly into light mount in Protection bar and centralize light to hole. **TIGHTEN FIRM ONLY. NOTE: Do not fit ECB light trims to protection bar at this point.**
25. Attach 6mm clip lock trim (supplied) to top and winch opening of ECB protection bar. **NOTE: Trim off lower edge so trim will sit to end of protection bar. Attach 3mm clip lock to top cut lip of bumper cover. Trim neatly to size. See figures 13 & 14.**
26. *ECB recommends that this step is completed by 2 people:* Attach protection bar and auxiliary mounting brackets to outside of steel mounting brackets using three ½ x 2 ½ bolts, washers, spring washers and nuts (per side) (supplied). **Caution: Non fitment of auxiliary mounting brackets will void warranty of this product.**
27. Align protection bar with approximately 12mm clearance off bumper and 3-5mm from contacting top of bumper under grille. Fit control box mount to inside of channel lower leg using two M6 x 20 bolts, flat washers and nyloc nuts (supplied). **See figures 15 and 16.**
28. **Tighten all nuts and bolts.**



**WORLD'S BEST
ALLOY BULLBARS**

East Coast Bullbars (ECB Pty Ltd)

Tel: 07 3897 5700

Fax: 07 3283 1168

ecb@ecb.com.au www.ecb.com.au

29 Snook St
Clontarf QLD 4019
Australia

Po Box 122
Margate QLD 4019
Australia

29. Connect ECB indicator/park light and fog lamps. Ensure wiring is routed in such a manner to avoid any sharp edges etc.
30. **Check all lights for correct operation.** Fit ECB fog lamp trims to protection bar, large side to inside.
31. **Check winch for correct operation.**
32. Place top vents upside down to maximise air flow to radiators.

ENSURE NUMBER PLATE IS CLEARLY VISABLE

Note: When fitting/refitting the licence plate to the vehicle, ensure there is no obstruction to licence plate vision in accordance with local authorities. If required, relocate licence plate to an alternate location.

Further VFPS Notes:

- a) Do not attach VFPS to the vehicle using anchorages not intended for this purpose (e.g. engine mounting bolts).
- b) Do not use this product for any vehicle make or model, other than those specified by the VFPS manufacturer.
- c) Do not remove the plaque or label from the VFPS.
- d) Do not modify the structure of the VFPS in any way.
- e) No accessory or fitment should project forward of the VFPS forward profile.
- f) **ENSURE THESE INSTRUCTIONS ARE LEFT WITH VEHICLE OWNER AND/OR OPERATOR.**

IMPORTANT INFORMATION

Periodically check bolts and nuts for correct tightness, especially if travelling on rough roads

FITTING KIT

1 – ECB Steel Winch bracket	18 – ½ nuts
1 – Pair ECB Steel mount brackets	6 – 3/8 flat washers
1 – Pair ECB Steel auxiliary mount brackets	12 – M6 x 20 bolts
1 – Pair ECB Steel Gusset Brackets	22 – M6 flat washers
1 – ECB alloy control box mount	12 – M6 spring washers
1 – Pair ECB bumper retaining brackets (IN FITTING KIT)	8 – M6 nuts
8 – M10 x 1.25 nuts	2 – M6 nyloc nuts
4 – M12 spring washers	2 – M6 nuts
4 – M12 flat washers	1 – 2600mm length 6mm clip lock trim
4 – M12 x 1.25 x 55 bolts	1 – 800mm length 6mm clip lock trim
8 – M10 Spring washers	1 – 1300mm length 3mm clip lock trim
8 – M10 flat washers	1 – ECB LED Indicator / Park light kit
6 – ½ x 2 bolts	1 – ECB fog light kit
6 – ½ x 2 ½ bolts	1 – Pair fog light surrounds
6 – ½ x 1 ½ bolts	10 – Cable locks
38 – ½ flat washers	3 – 300mm zip ties
18 – ½ spring washers	



WORLD'S BEST
ALLOY BULLBARS

East Coast Bullbars (ECB Pty Ltd)

Tel: 07 3897 5700

Fax: 07 3283 1168

ecb@ecb.com.au www.ecb.com.au

29 Snook St
Clontarf QLD 4019
Australia

Po Box 122
Margate QLD 4019
Australia



Figure 1: Clip on underside of plastic bumper, shown with bumper removed



Figure 2: Retaining bracket



Figure 3: Tow hook attached to ECB winch frame



Figure 4: Protection bar mount – Drivers side shown

Steel gusset bracket ½ x 2 ½ bolts/nuts and washers

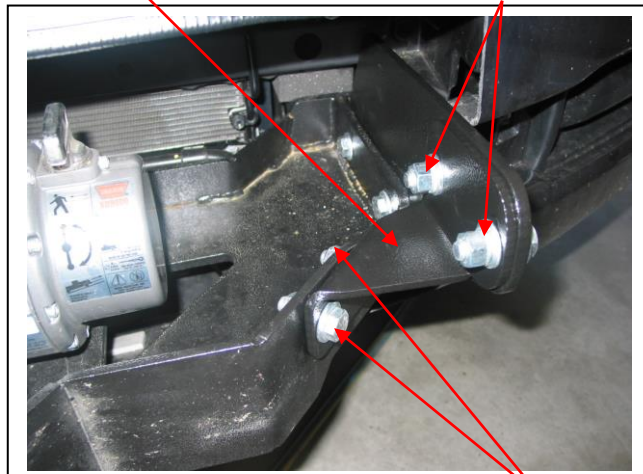


Figure 5 – Passenger side shown ½ x 1 ½ bolts/nuts and washers

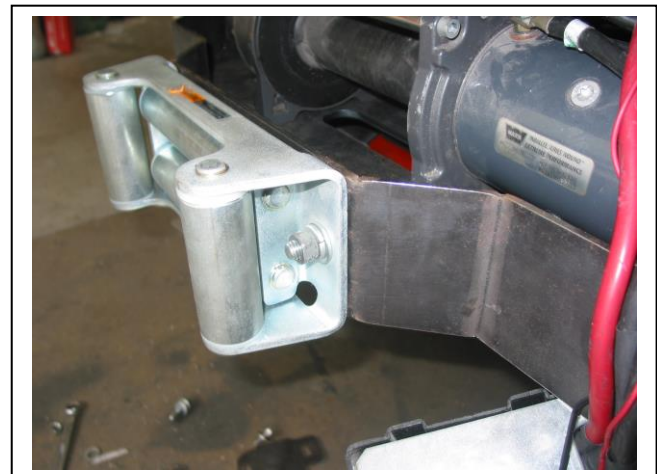


Figure 6: Fairlead roller fitted



WORLD'S BEST
ALLOY BULLBARS

East Coast Bullbars (ECB Pty Ltd)

Tel: 07 3897 5700

Fax: 07 3283 1168

ecb@ecb.com.au www.ecb.com.au

29 Snook St
Clontarf QLD 4019
Australia

Po Box 122
Margate QLD 4019
Australia



Figure 7: Control bow mount on Warn XP 9.5 winch control box



Figure 8: Control box attached through bumper

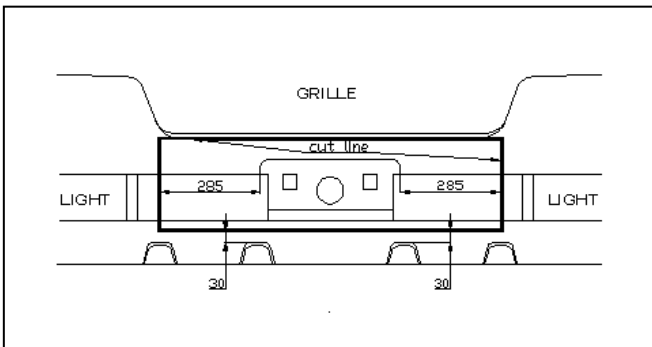


Figure 9: Bumper cut lines

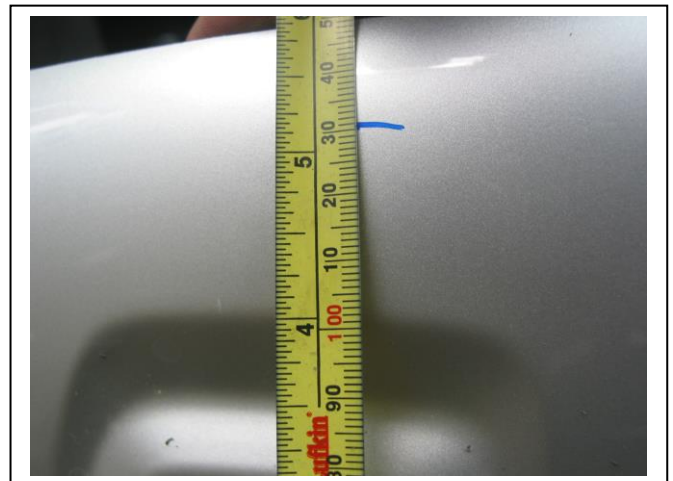
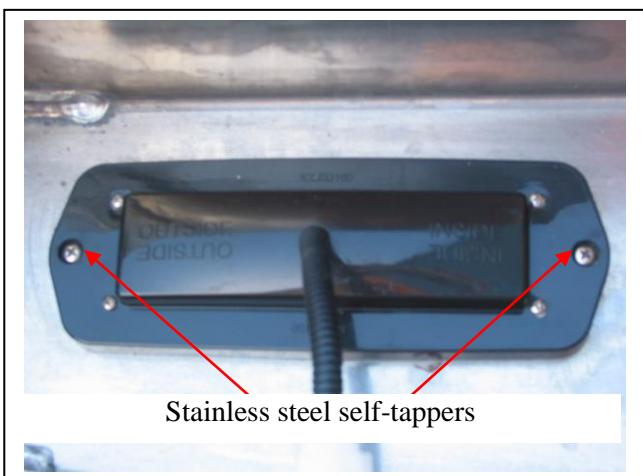
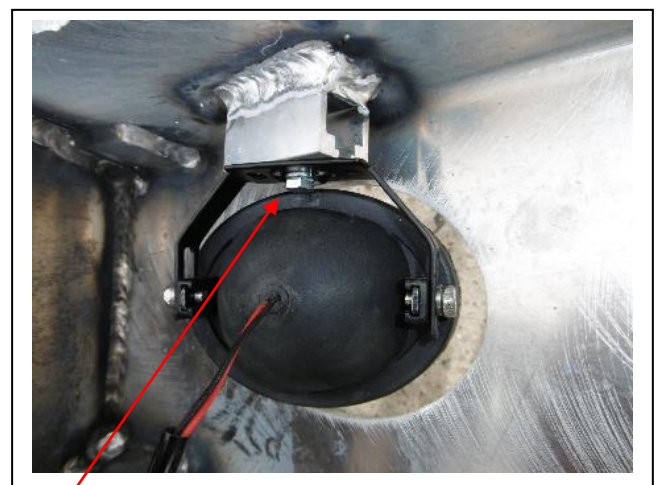


Figure 10: 30mm from lower indent on bumper



Stainless steel self-tappers

Figure 11



M6 bolt

Figure 12



**WORLD'S BEST
ALLOY BULLBARS**

East Coast Bullbars (ECB Pty Ltd)

Tel: 07 3897 5700

Fax: 07 3283 1168

ecb@ecb.com.au www.ecb.com.au

29 Snook St
Clontarf QLD 4019
Australia

Po Box 122
Margate QLD 4019
Australia

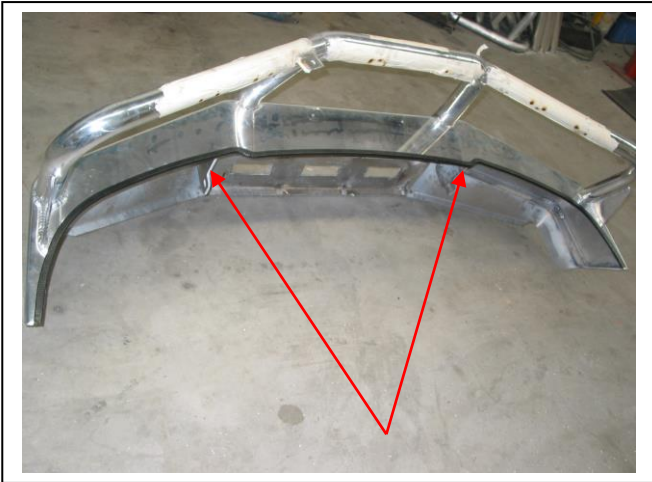


Figure 13: Clip lock trim on ECB Protection Bar

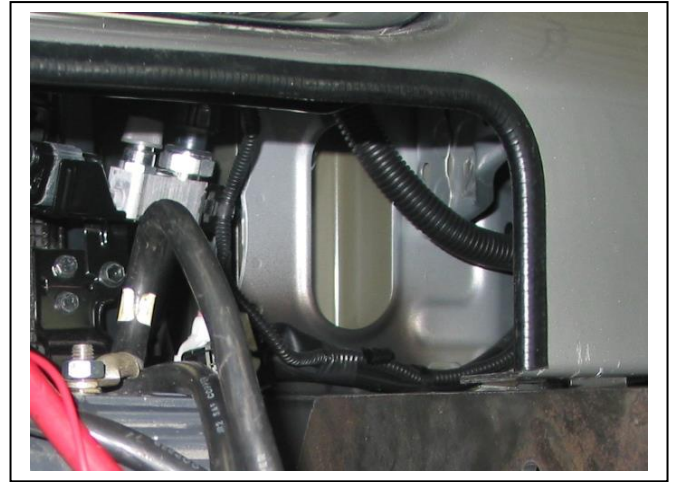


Figure 14: 3mm clip lock on passengers side of bar



Figure 15: Front view shown



Figure 16: Side view shown



**WORLD'S BEST
ALLOY BULLBARS**

East Coast Bullbars (ECB Pty Ltd)

Tel: 07 3897 5700

Fax: 07 3283 1168

ecb@ecb.com.au www.ecb.com.au

29 Snook St
Clontarf QLD 4019
Australia

Po Box 122
Margate QLD 4019
Australia

We value your comments

Dear Fitter,

ECB would like to know how you went with the installation of this product. We value your comment and may need to contact you to clarify some details so please complete your contact details clearly.

We would appreciate if you could complete as many of the following details as possible.

Your Name:	Your contact No.
Product Part No.	Product Invoice No.
Product Description:	Make, model, and year of vehicle:
Product Work Order No.	Company your from/Company product purchased from:

Date of Fitment: ___/___/___

Was the fitting hardware supplied complete?

Yes

No

If no what was not supplied

Did the installation go well?

Yes

No

Please provide comments

Please draw diagrams if you need to.

Post to
Reply Paid 122
PO Box 122
Margate QLD 4019

Fax to
(07) 3283 1168



**WORLD'S BEST
ALLOY BULLBARS**

East Coast Bullbars (ECB Pty Ltd)

Tel: 07 3897 5700

Fax: 07 3283 1168

ecb@ecb.com.au www.ecb.com.au

29 Snook St
Clontarf QLD 4019
Australia

Po Box 122
Margate QLD 4019
Australia



WORLD'S BEST
ALLOY BULLBARS

East Coast Bullbars (ECB Pty Ltd)

Tel: 07 3897 5700

Fax: 07 3283 1168

ecb@ecb.com.au www.ecb.com.au

29 Snook St
Clontarf QLD 4019
Australia

Po Box 122
Margate QLD 4019
Australia

DESPATCH CHECKLIST BT107SY

ICZBKCT107



Work Order #	
Finish:	
Transport:	
Due Date:	

- 1 – ECB steel winch bracket.
- 1 – Pair of ECB steel mounting brackets.
- 1 – Pair of ECB steel auxiliary mounting brackets.
- 1 – Pair of ECB steel gusset brackets.
- 1 – ECB alloy control box mount.
- 1 – Pair ECB bumper retaining brackets **(IN FITTING KIT)**
- 1 – Bolt Kit.
- 1 – ECB LED Indicator / Park light kit.
- 1 – ECB fog light kit
- 1 – Pair fog light surrounds.
- 1 – 2600mm length 6mm clip lock.
- 1 – 800mm length 6mm clip lock.
- 1 – 1300mm length 3mm clip lock.
- 2 – ECB overrides – **Fitted to bar.**
- 5 – 6mm air scoops – **Fitted to bar.**



Is this product “the best it can be” Yes _____/_____

Wrapper's initials / Checker initials

If **NO** fix before continuing

All parts checked and completed by:

Nut and bolts: _____ Date __/__/__

Order control: _____ Date __/__/__

Final wrap check: _____ Date __/__/__.



**WORLD'S BEST
ALLOY BULLBARS**

East Coast Bullbars (ECB Pty Ltd)

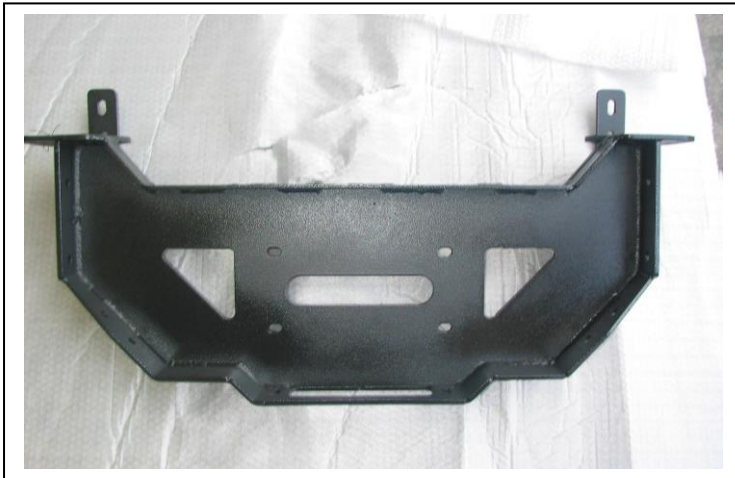
Tel: 07 3897 5700

Fax: 07 3283 1168

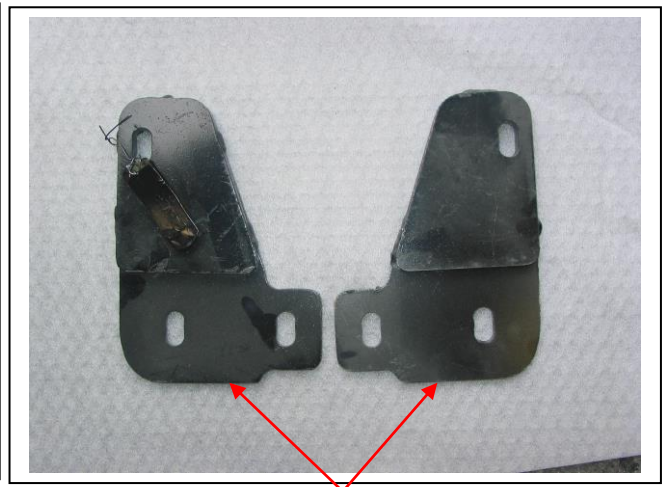
ecb@ecb.com.au www.ecb.com.au

29 Snook St
Clontarf QLD 4019
Australia

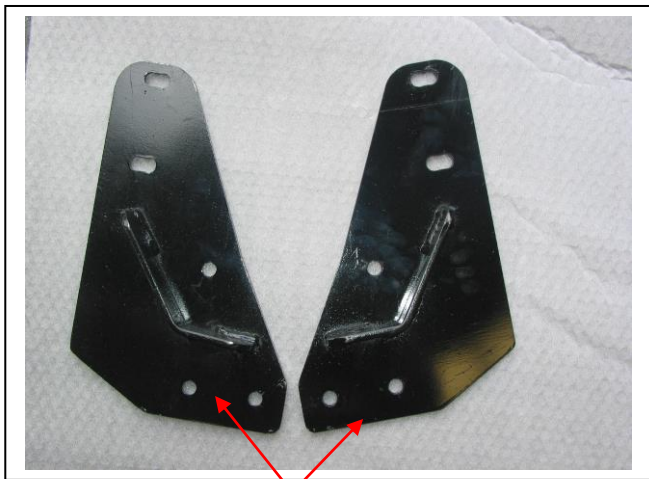
Po Box 122
Margate QLD 4019
Australia



Winch Mounting Bracket



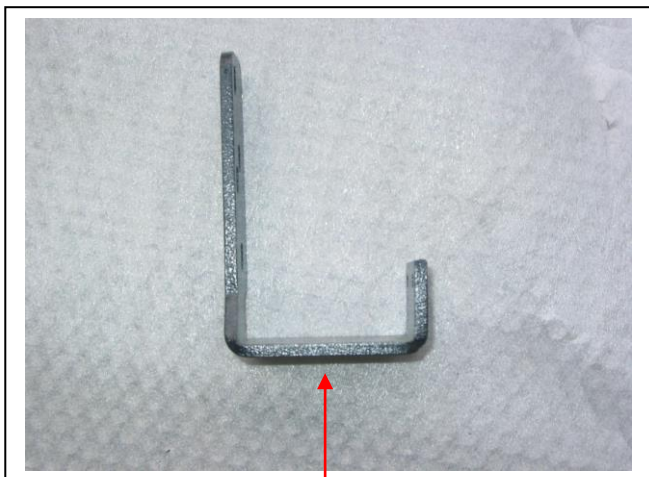
Auxiliary Mounting Brackets



Bar Mounting Brackets



Steel Gusset Brackets



Control Box Bracket



Steel Bumper retaining brackets (in fitting kit)